

FIGURAS TEMA 20

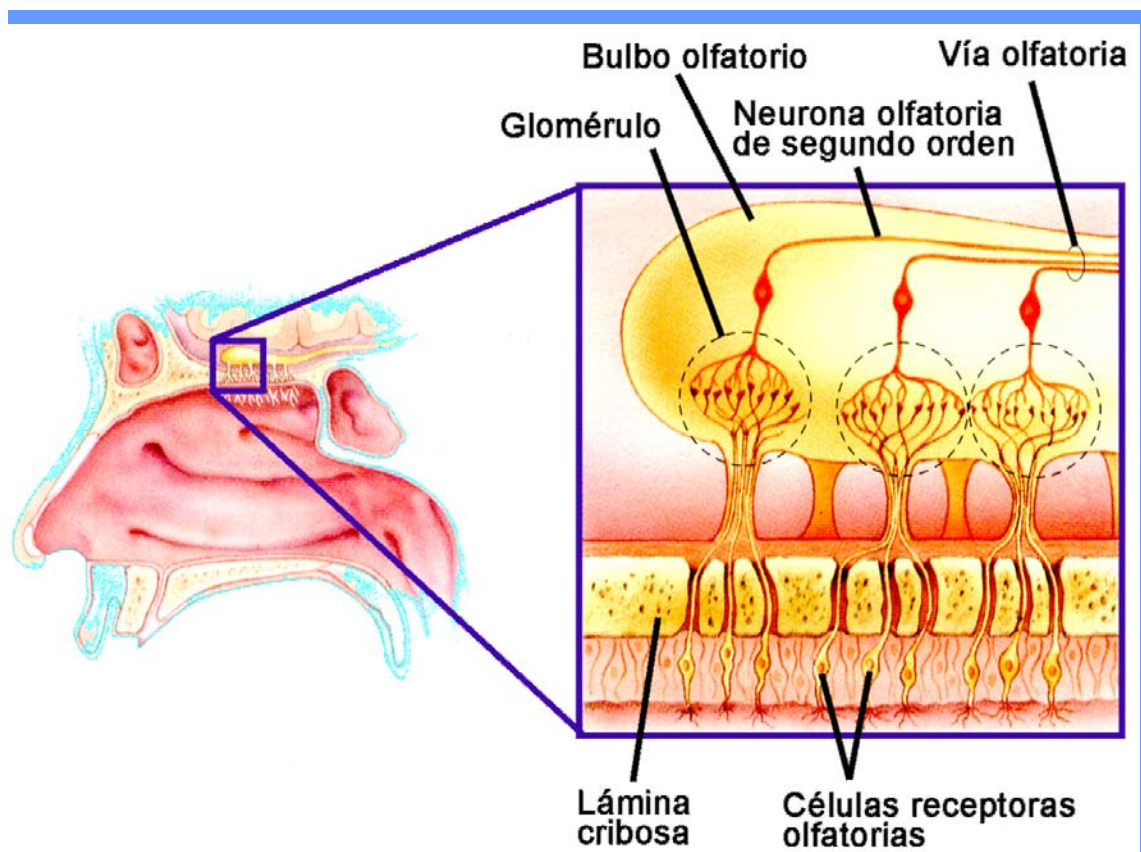
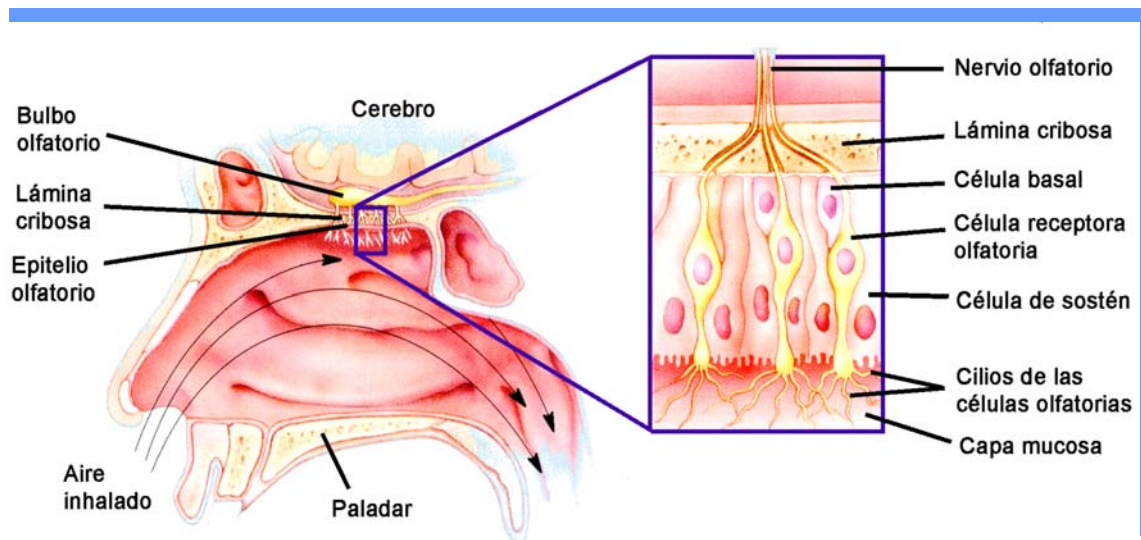


Fig. 20.1. Receptores olfatorios

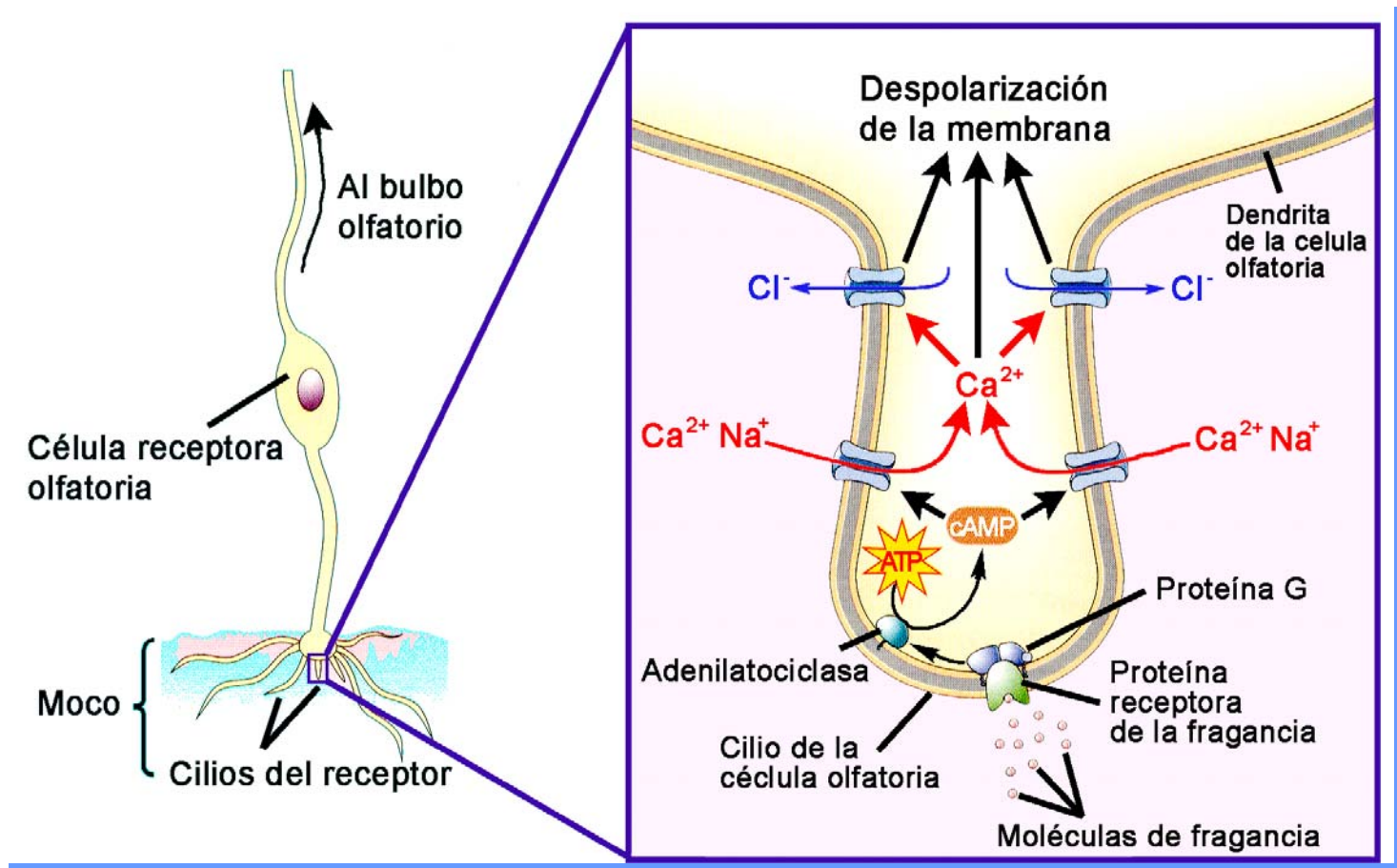


Fig. 20.2. Activación de receptores olfatorios.

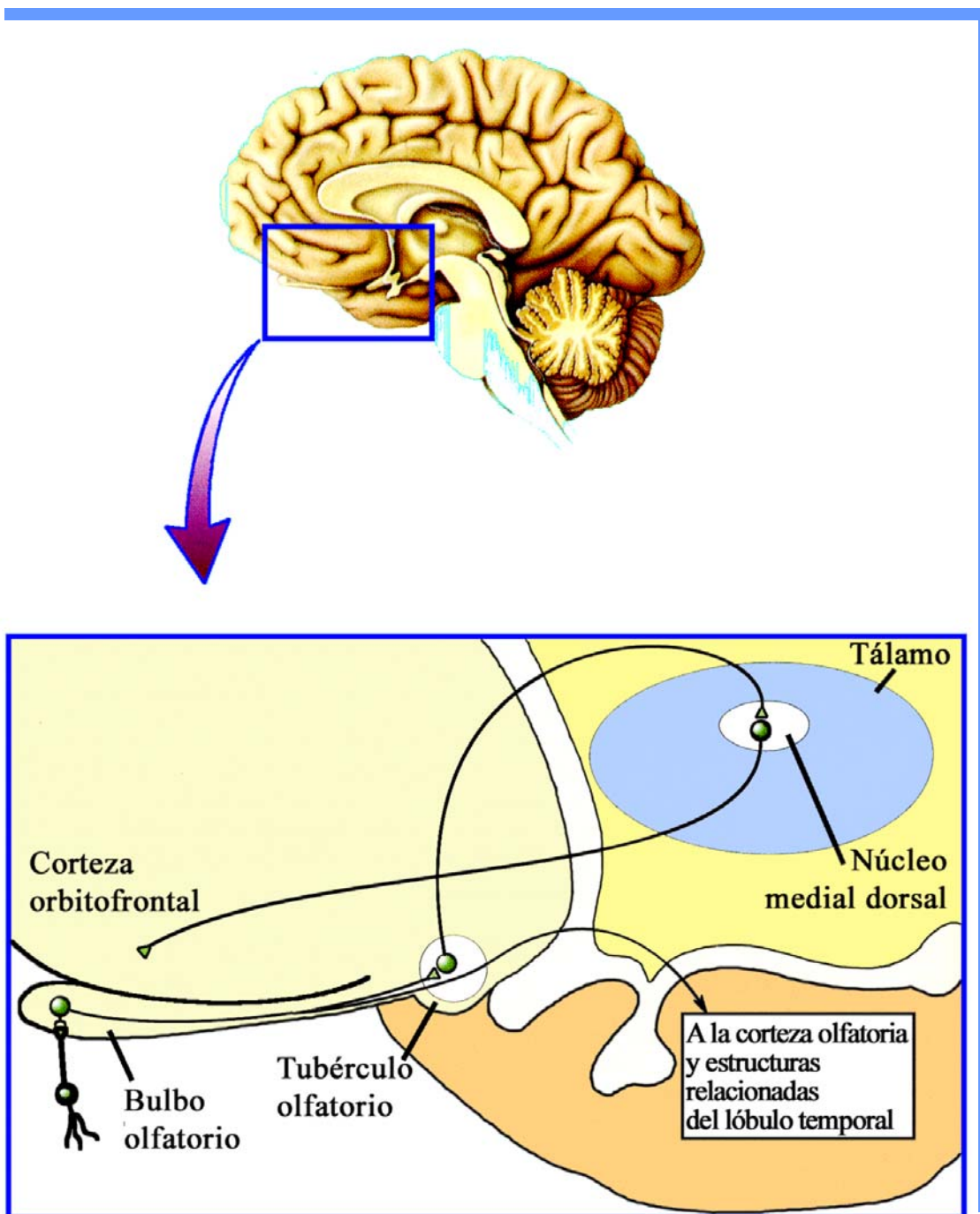
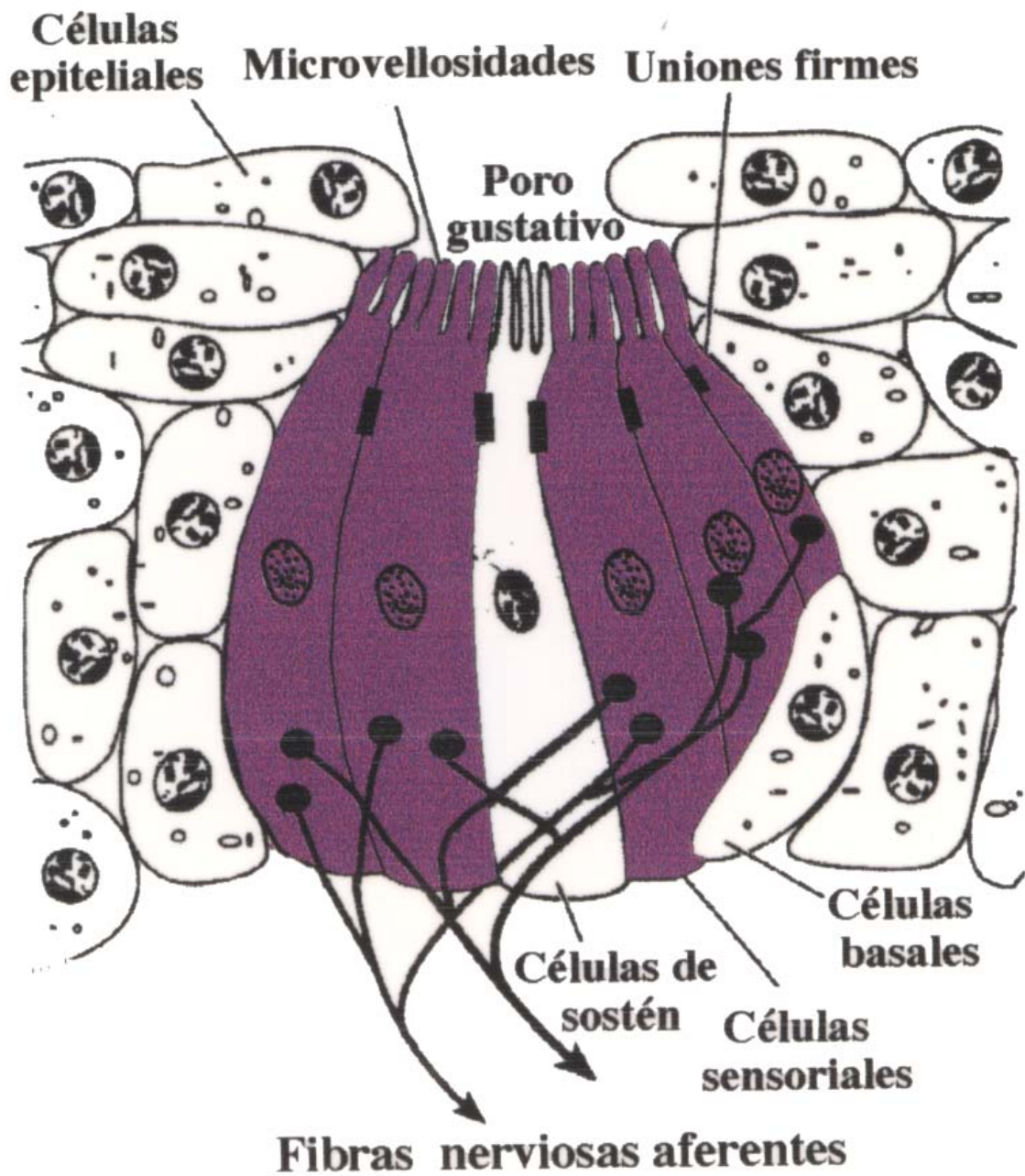


Fig. 20.3. Vías y centros nerviosos del olfato.

Fig. 20.4. Receptor del gusto



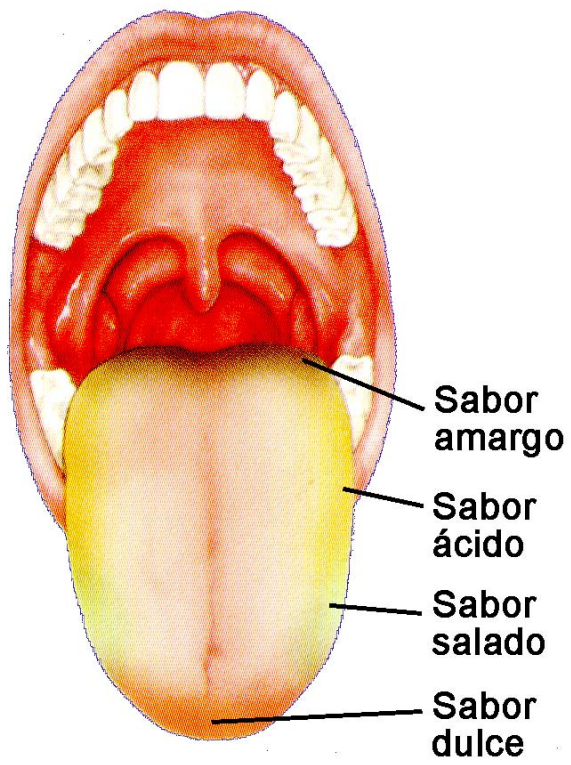


Fig. 20.5. Regionalización de la lengua.



Medida de las preferencias de las neuronas gustativas

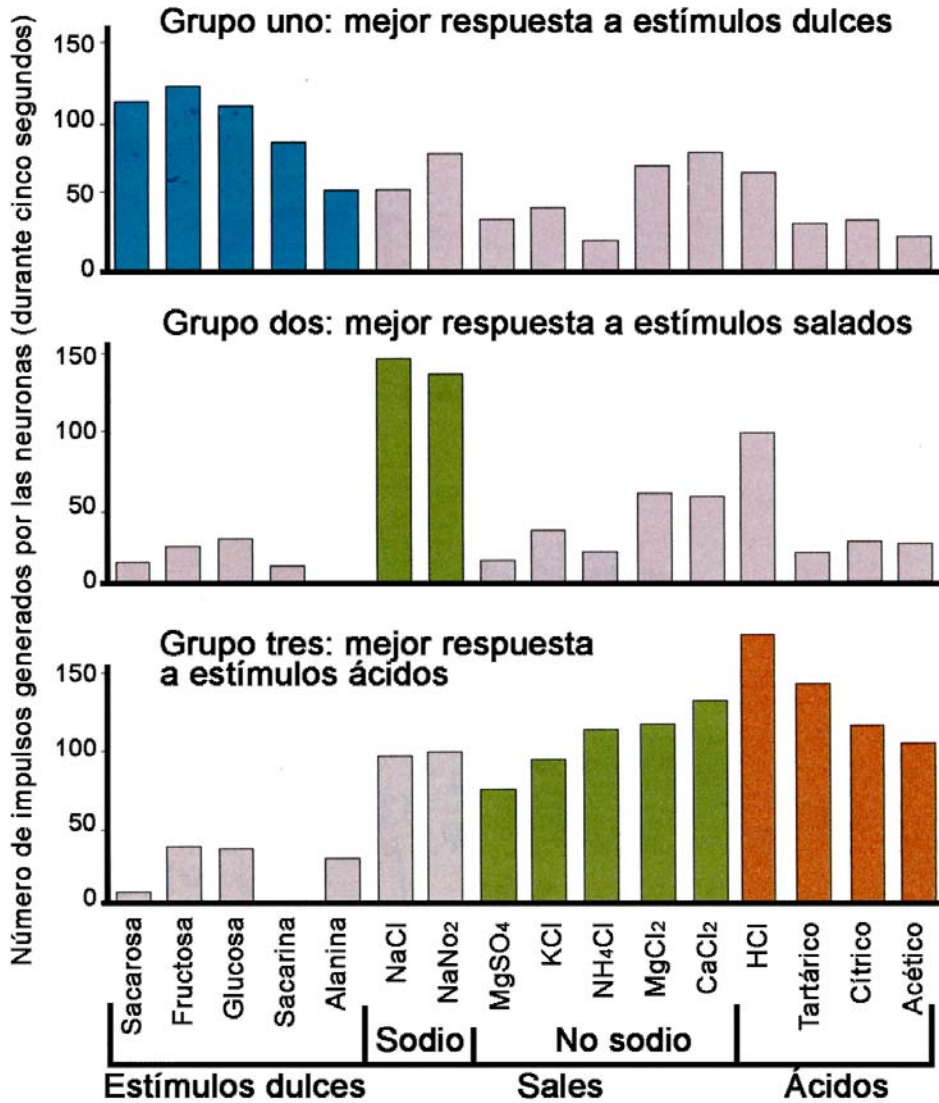


Fig. 20.6. Modelo actual de activación de receptores del gusto.

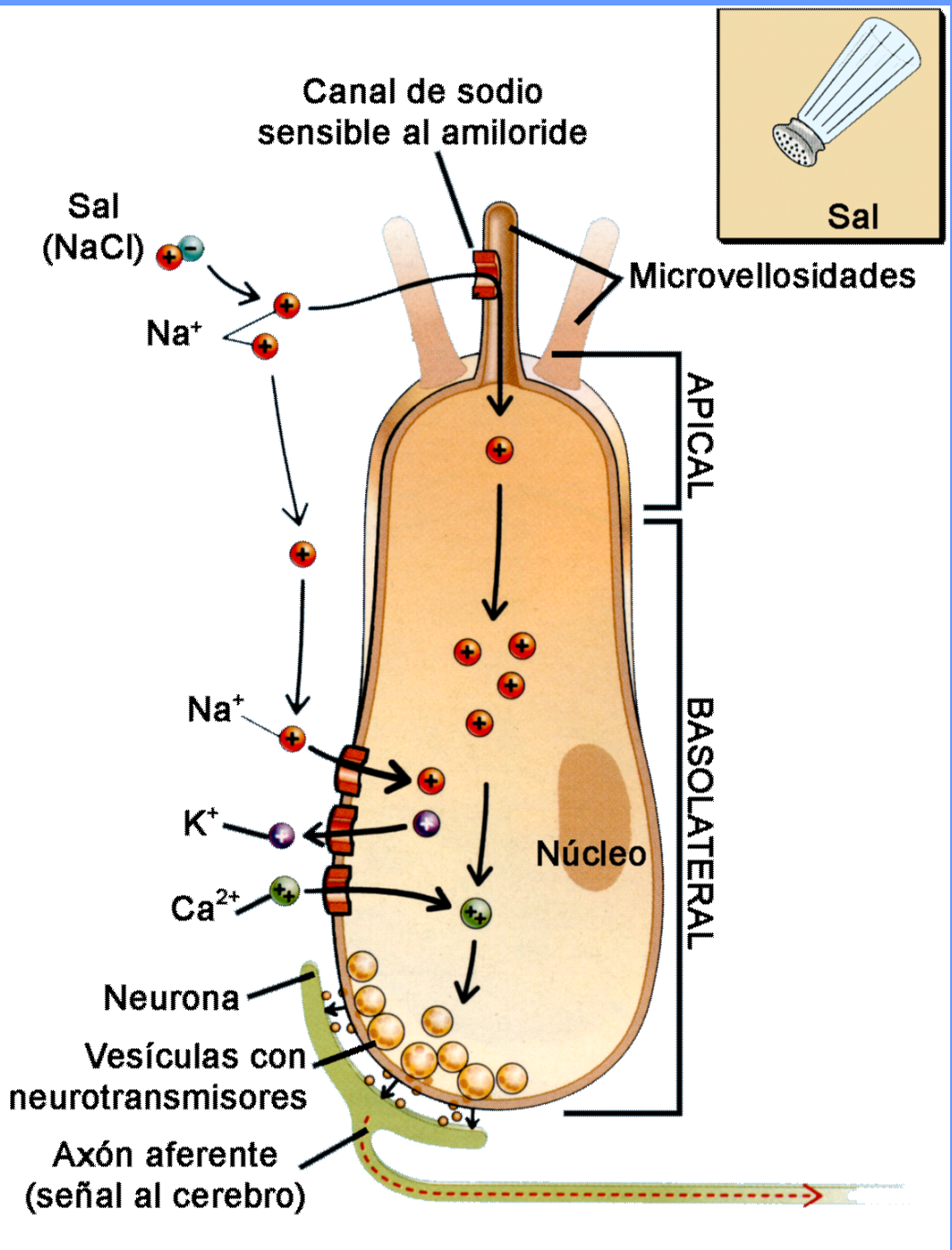


Fig. 20.7. Percepción del sabor salado.

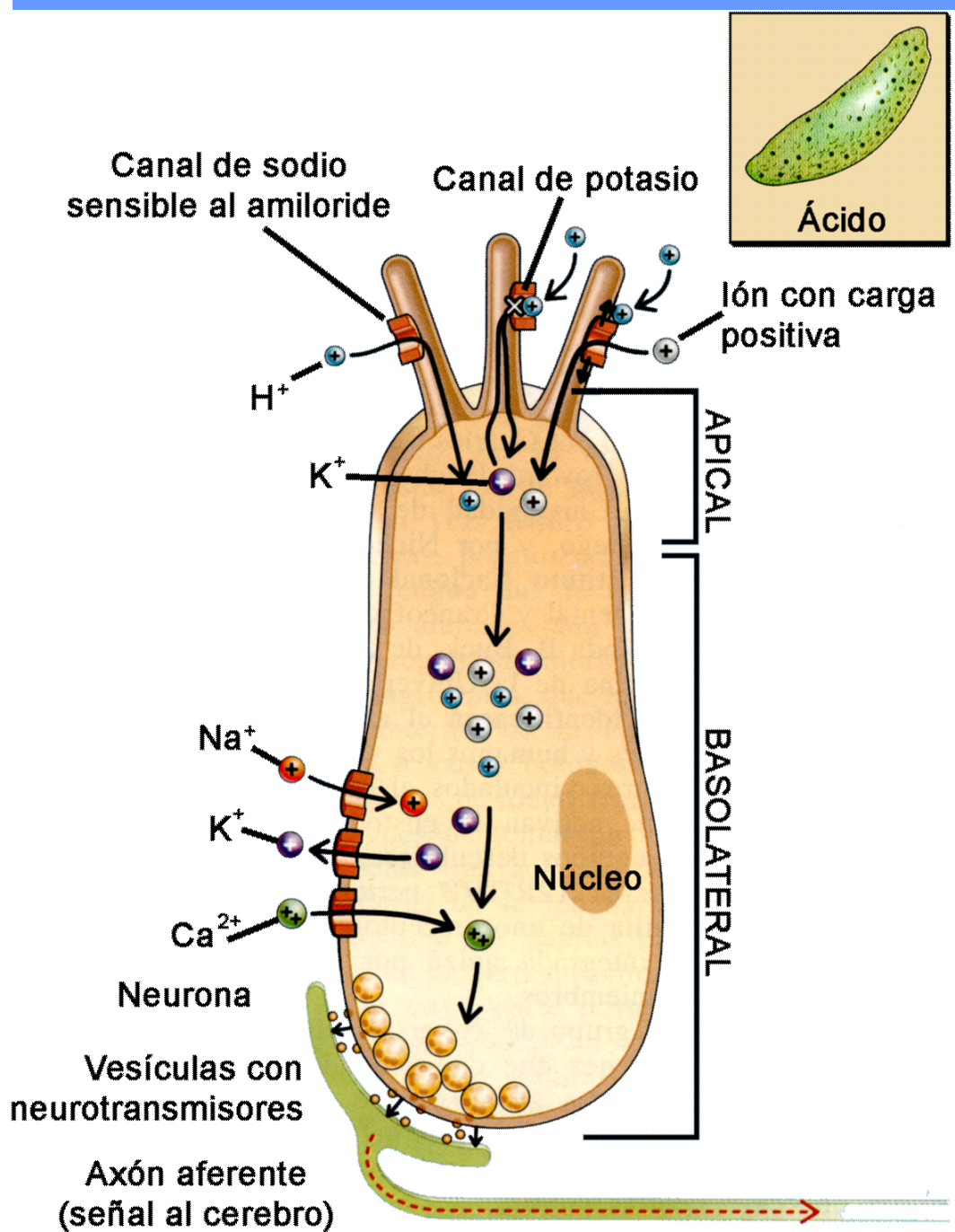


Fig. 20.8. Percepción del sabor ácido.

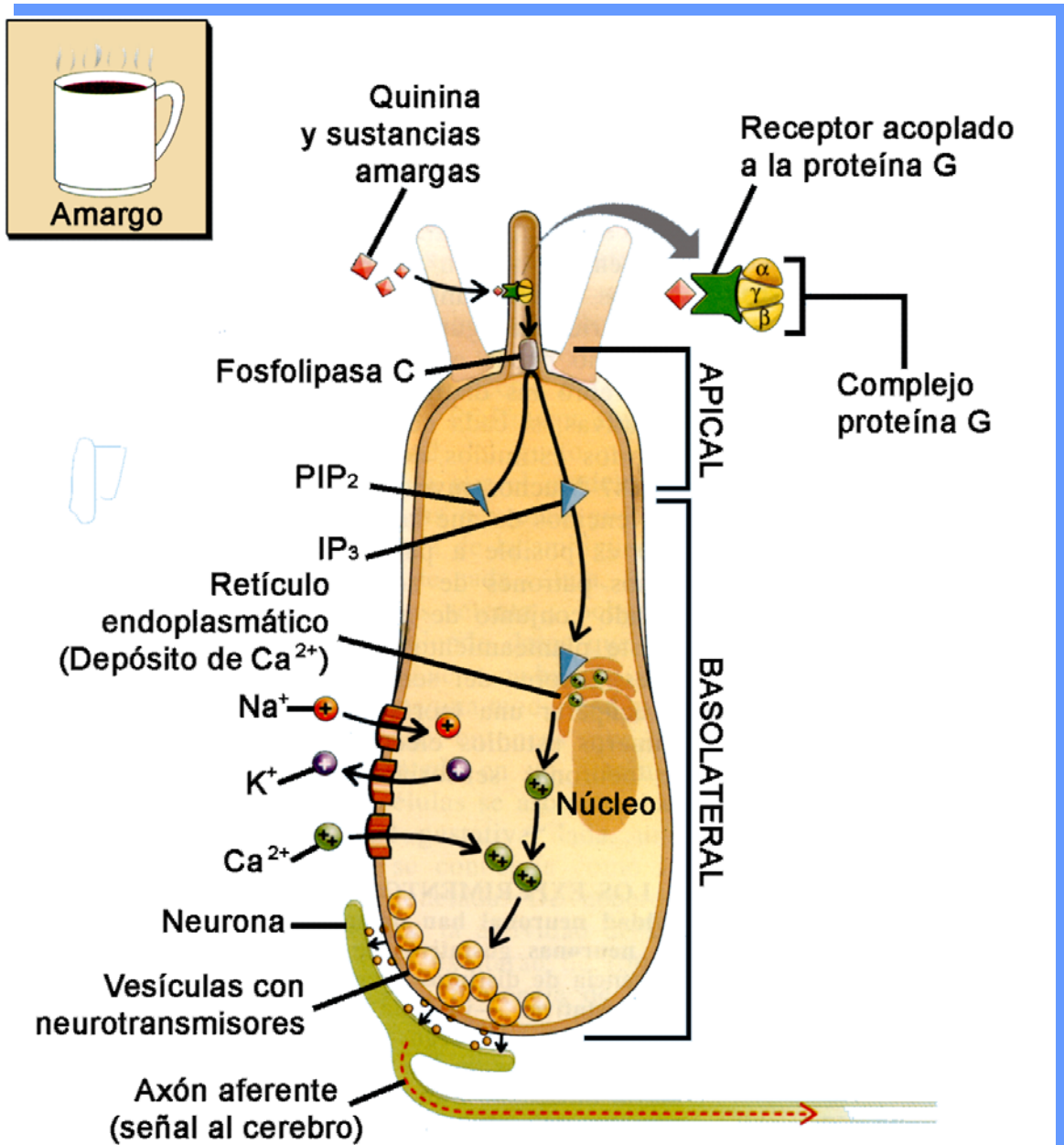


Fig. 20.9. Percepción del sabor amargo.

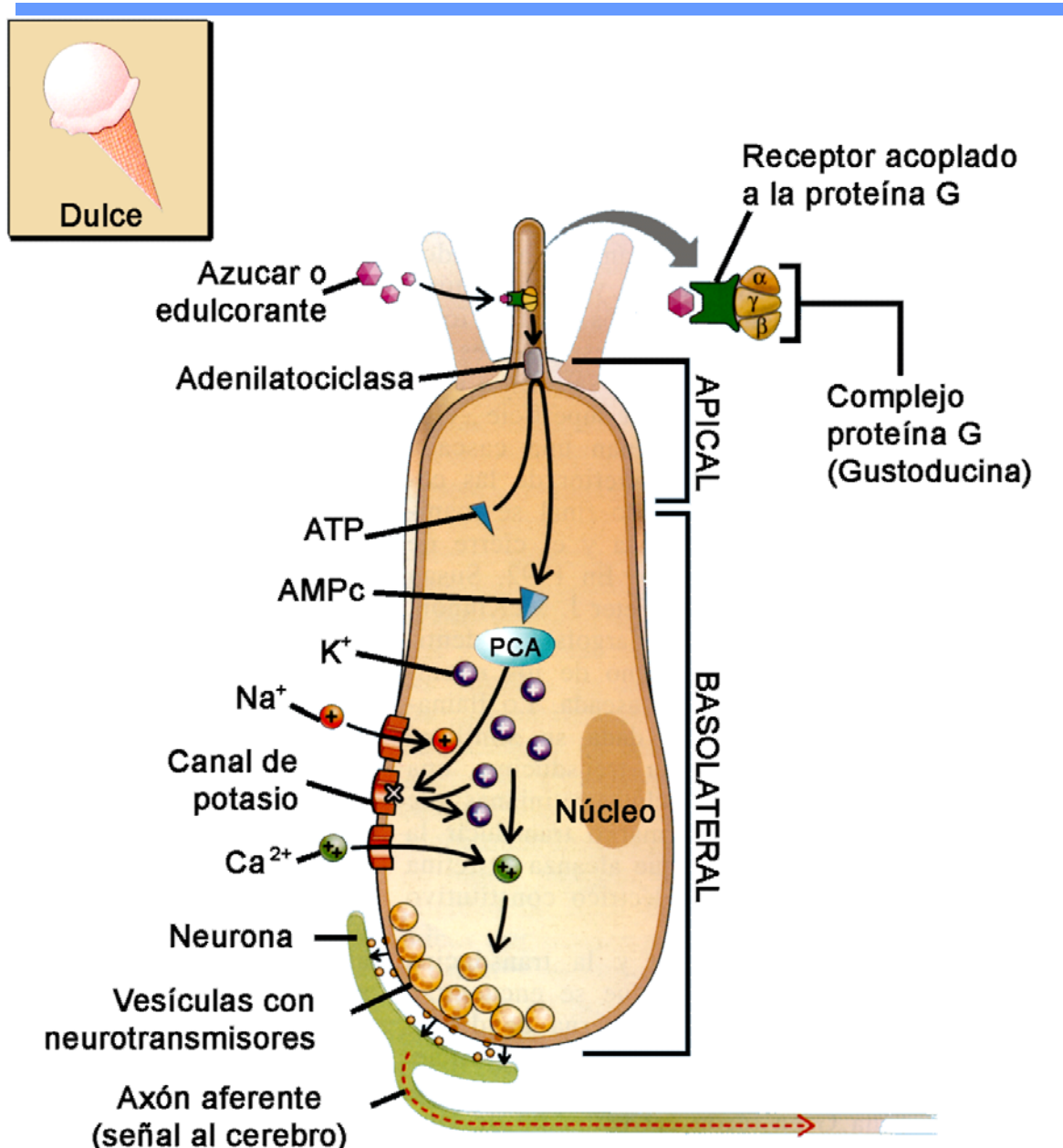


Fig. 20.10. Percepción del sabor dulce.

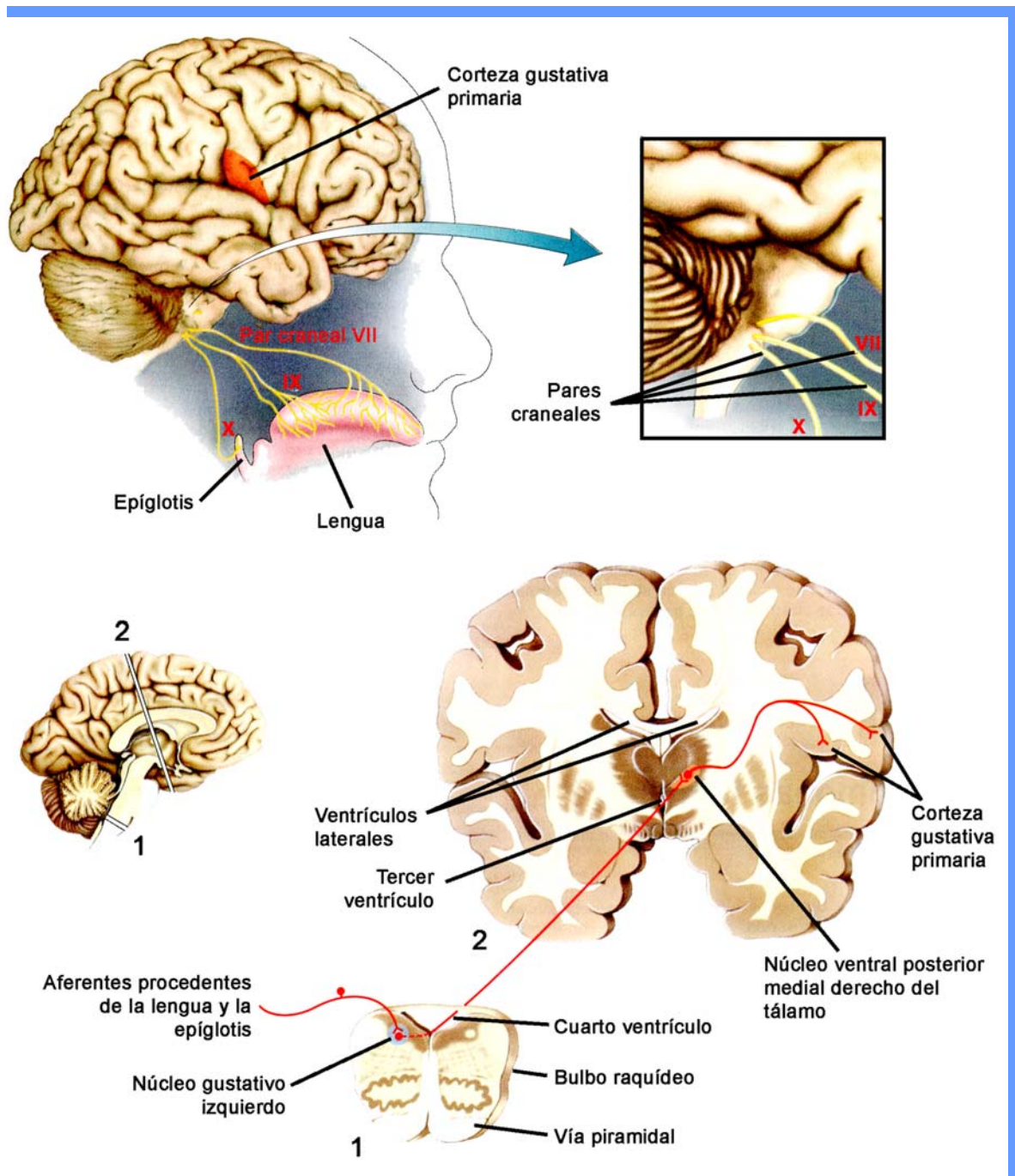


Fig. 20.11. Vías y centros nerviosos del gusto.

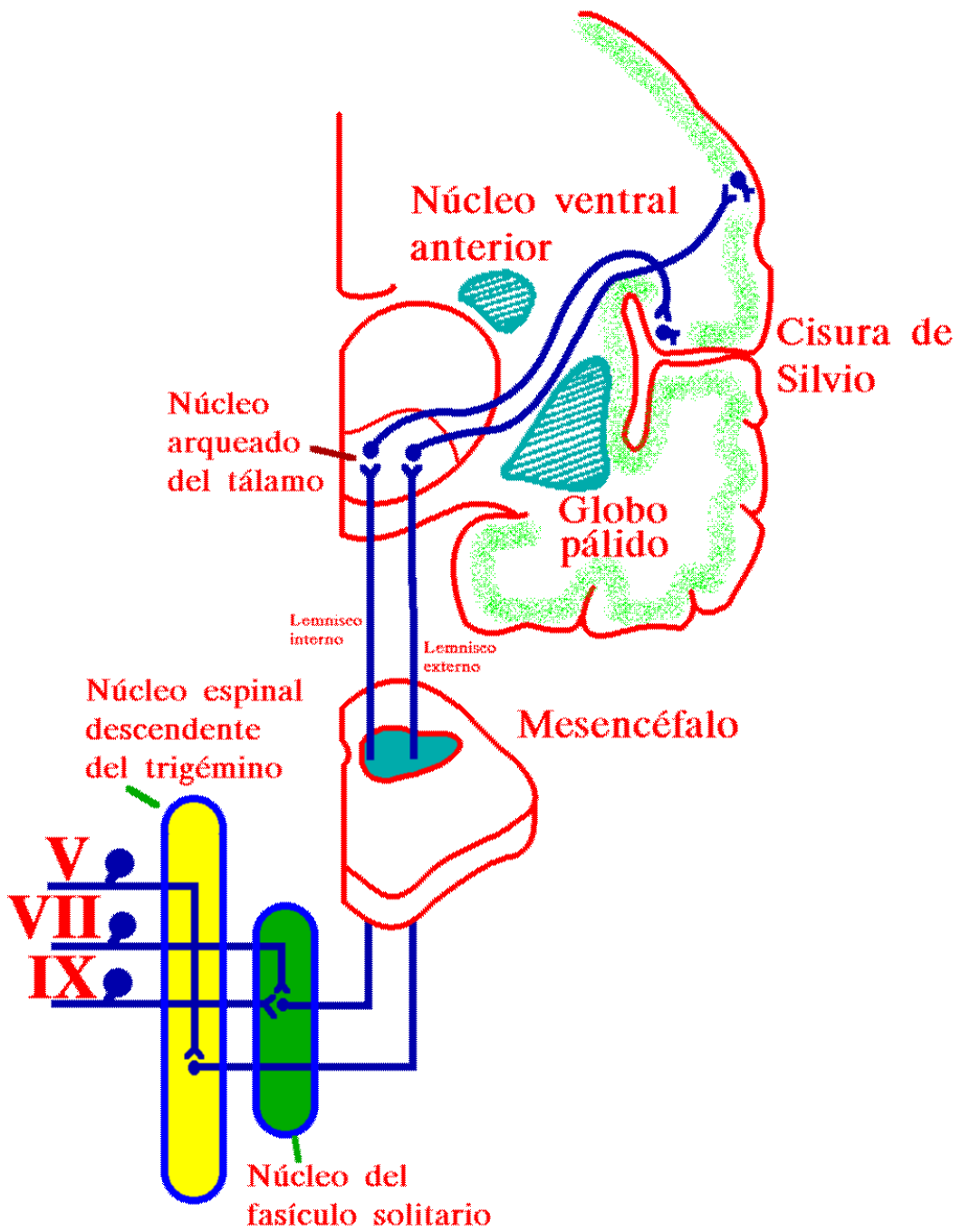


Fig. 20.12. Esquema de las vías y centros nerviosos del gusto.