

Global Summer School 2026 – Factsheet (University)

1. Programme Overview

- Non-credit bearing (certificate upon completion)
- Programme structure:
 - Week 1 and/or Week 2
 - Week 1:
28 June 2026 - 5 July 2026
Physical Activity & Sports Management
 - Week 2:
5 July 2026 - 12 July 2026
AI and Humanities
 - Classes from Monday to Friday
 - Excursions in the afternoon
 - Free time in weekends

2. Application

Application Deadline: 9 March 2026

Apply via <https://apply.ln.edu.hk>

- (1) Register for account with their email
 - (2) Activate the account and login
 - (3) Select New Application > Other Programmes > Global Summer School
 - (4) A **non-refundable deposit** of HKD 2,400 will be charged upon application. This amount will be deducted from the programme fee, which will be settled at a later stage.
-

3. Programme Fees

Payment Deadline: 20 Mar 2026

- Standard Fee: USD 1,500 per week / USD 2,500 for both weeks
 - Early Bird Discount: USD 1,200 per week / USD 2,000 for both weeks [Apply before 26 Jan 2026]
 - Includes hostel (Sun-Sun), lectures, lunch & excursions (Mon–Fri)
-

4. Accommodation

We provide on-campus hostel accommodation in twin rooms.

Check-in / Check-out Schedule

- Week 1
 - Check-in: 28 June 2026 (Sun)
 - Check-out: 5 July 2026 (Sun)
- Week 2
 - Check-in: 5 July 2026 (Sun)
 - Check-out: 12 July 2026 (Sun)

Check-in / Check-out Time

- 10:00 AM – 1:00 PM
- 2:00 PM – 6:00 PM

Transportation

- Participants should arrange their own transportation between the airport and Lingnan University.
 - OGE staff will provide support for hostel check-in and check-out at campus during the designated dates and times.
-

5. Lecture details

Week 1: Physical Activity & Sports Management

- Dates: 29 June – 3 July 2026 (Mon – Fri) (5 sessions per week)
- Time: 9:30 AM – 12:30 PM (3 hours per session)

Week 2: AI and Humanities

- Dates: 6 July – 10 July 2026 (Mon – Fri) (5 sessions per week)
- Time: 9:30 AM – 12:30 PM (3 hours per session)

Medium of Instruction: English

6. Lunch

- Lunch at Lingnan House Chinese Restaurant (Mon–Fri)
-

7. Excursions

- Excursions will be arranged after lunch (Mon–Fri)

A round-trip coach will be provided, and one English-speaking tour guide will accompany the group.

8. Insurance

- All participants must purchase comprehensive insurance coverage on their own before arrival.

All summer school participants are required to purchase their own comprehensive insurance. The insurance must cover travel, personal accident, medical expenses (both accident and non-accident), hospitalisation, and emergency evacuation/repatriation for the entire programme duration. Participants are required to provide proof of insurance coverage before departure.

9. Visa

- It is the responsibility of all participants to ensure that they possess valid travel documents for entry into Hong Kong.

All summer school participants must hold valid travel documents (including visa, if applicable) for entry into Hong Kong and ensure they can remain for the entire programme period without requiring additional visa arrangements. They must check the requirements and apply well in advance to avoid any travel disruptions. (Reference: <https://www.immd.gov.hk/eng/services/visas/visit-transit/visit-visa-entry-permit.html>)

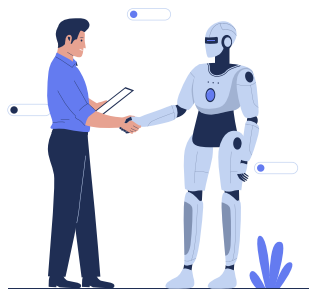
Ranks **1st** Worldwide for
‘Quality Education’

*Lingnan University’s
Commitment to United Nations’
Sustainable Development Goals*



Experience Hong Kong!

2026 Global Summer School



**AI and
Humanities**

oge@LN.edu.hk



**Physical Activity
and Sports
Management**

SCAN ME



About Lingnan

Lingnan University stands as a distinguished research-focused liberal arts institution, dedicated to pioneering education for the digital age. Founded in 1888, Lingnan University has long been a cornerstone of academic excellence. Our commitment to exceptional teaching, innovative research, and strong community engagement drives us towards global recognition.

Global Summer School

We welcome students from around the world to join us for 1 or 2 weeks of unparalleled academic experience in the vibrant city of Hong Kong. Our programme offers a unique opportunity to combine world-class education with cultural exploration and personal growth. Embark on a transformative journey where learning meets adventure. Build up your network by making new friends from all over the world in one of Asia's most international cities.



Build
Network



Study in
English



Explore Hong
Kong

Other information

Lingnan University reserves the right to cancel any programme in case there are not enough applicants. In such case the University will offer another option or refund the fees. Any questions and support students may require prior to arrival and during their stay can be directed to our coordinators.

Programme Coordinator

Ms. Krystal MOK

Email: gss_oge@ln.edu.hk

Why study at LU?

- **Rank #1 Quality Education**
Times Higher Education (THE) Impact Rankings 2025
- **Awarded 5 Stars+ QS Rating**
- **Rank #1 International Faculty**
QS Asia University Rankings 2021
- **Top 10 Liberal Arts College in Asia**
Forbes 2015
- **Rank #2 Quality Education**
THE University Impact Ranking 2023
- **Rank #1 Inbound Exchange**
QS Asia University Rankings 2021
- **Rank #1 Outbound Exchange**
QS Asia University Rankings 2021
- **World's Top 2% Scientists**
Fourteen (14%) of the faculty
- **Close to City (25mins to TST)**
- **Near Shenzhen, China (15mins)**
- **10 mins to the Gold Coast Beach**
- **High Teaching Evaluations (5/6)**



Programme Structure

Medium of instruction: English



Morning lessons
9:30am - 12:30pm

USD 1500



Week 1 - Starting 29th June 2026^

School of Interdisciplinary Studies

Programme: Physical Activity & Sports Management

Session 1. Applied Sports Science & Physical Training

Session 2. Sports Business Management

Session 3. Facilities Management

Session 4. Sports Promotion

Session 5. Site Visit to Kai Tak Sports Park



Through interactive sessions and site visits, you'll learn about trends in sports business, facility management, and sports science. Visits to a world-class sports centers will offer hands-on experience, showcasing the practical application of theoretical concepts.



Week 2 - Starting 6th July 2026^

Faculty of Arts

Programme: AI and Humanities

Session 1. Digital Humanities

Session 2. Creativity and AI

Session 3. Ethics, Gender, and AI

Session 4. Machine Translation and AI

Session 5. AI, Science Fiction and Dystopia

USD 1500



Explore how Artificial Intelligence intersects with the humanities, focusing on ethics, creativity, and culture. Examine AI's influence on literature, history, and philosophy while considering its societal impact. You'll engage in discussions to better understand the human experience in an AI-driven world.

***DISCOUNTED PACKAGE OFFER:** STUDENTS ENROLLED ON BOTH PROGRAMMES WILL ENJOY A DISCOUNTED PRICE OF USD 2500, A SAVINGS OF USD 500.



^PROGRAMMES OUTLINES AND DATES ARE SUBJECT TO CHANGE

USD 2500*

Programme Structure



Afternoon Excursions 2pm - Early evenings

In the afternoons, each day students will be able to join a pre-arranged excursion tour. It will give students an opportunity to explore the city's unique blend of Eastern and Western cultures. Nature enthusiasts can escape the urban hustle by hiking endless picturesque trails or relaxing on the beautiful beaches. History buffs can delve into the rich heritage at the Hong Kong Museum of History in Tsim Sha Tsui. Whether you're seeking unforgettable adventure, culture, or relaxation, Hong Kong delivers much more than just academic knowledge. Students will easily discover the hidden gems and iconic landmarks of this captivating city.

Excursions



Clock Tower in
Tsim Sha Tsui



Tian Tan Buddha



Hong Kong
Observation Wheel



Choi Hung "Rainbow"
Estate



Hong Kong
Disneyland



Happy Valley
Racecourse



Mong Kok District



Repulse Bay



Kennedy Town
Tram Terminus



Shenzhen Greater
Bay Area



Tanantanut
Sawasdee
Thailand

Lingnan University provides not only world-class education but also strong support through its diverse community and numerous opportunities for cultural exchange, which have truly enriched my experience. I am grateful for the friendships and memories I've made while studying here.



Application Process



Eligibility

- Undergraduate students ✓
- at least IELTS 5.5 or equivalent ✓

Documents required for the registration:

- ID / Passport ✓



Programme Fees

- ✓ On-campus Accommodation
- ✓ Excursions
- ✓ Lunch at Lingnan Canteen / Hong Kong style restaurants
- ✓ Certificate

	Original price	Early bird discount*
1 course	USD 1500	USD 1200
2 courses	USD 2500	USD 2000

*Apply before 26 Jan 2026

Application Deadline

Monday, 9th March 2026



Programme fees include a non-refundable deposit of HKD\$2,400.
Students will be asked to settle the final installment around mid-March.





facebook

Photo

Create



Lingnan University

Just Now in Hong Kong

Our unforgettable moment!



I ❤️ LINGNAN

Top 10
Liberal Arts Colleges in Asia